



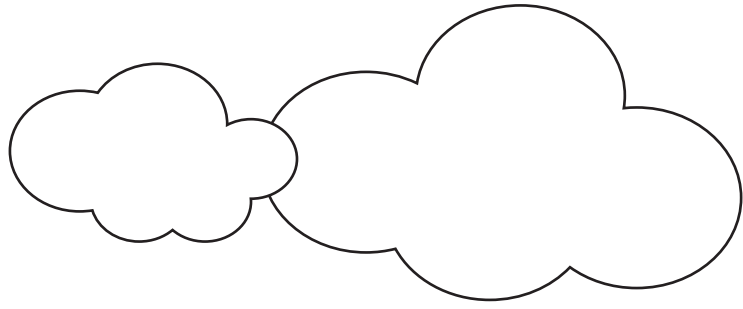
SOUTH DAKOTA

ACTIVITY BOOK



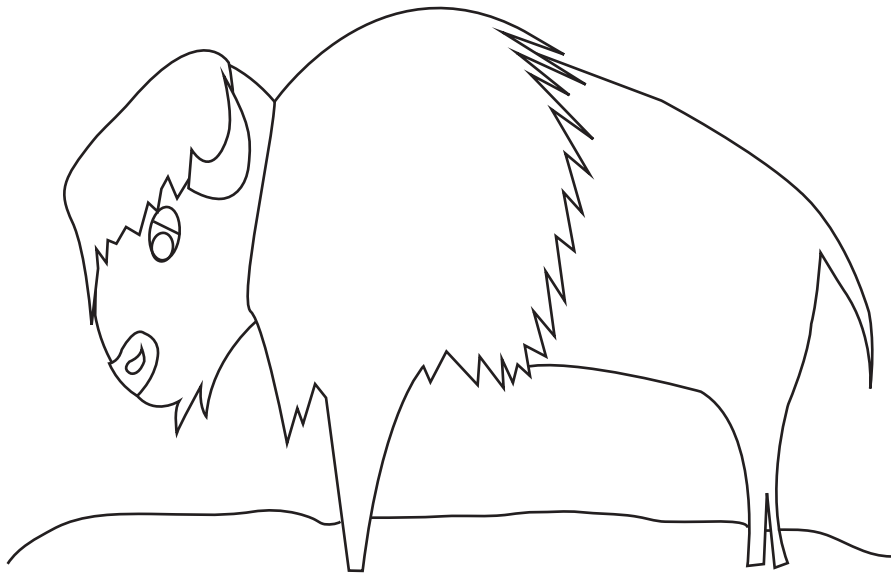
1-800-5-DAKOTA
SDINFO@STATE.SD.US
TRAVELSOUTHDAKOTA.COM
FOLLOW US ON:



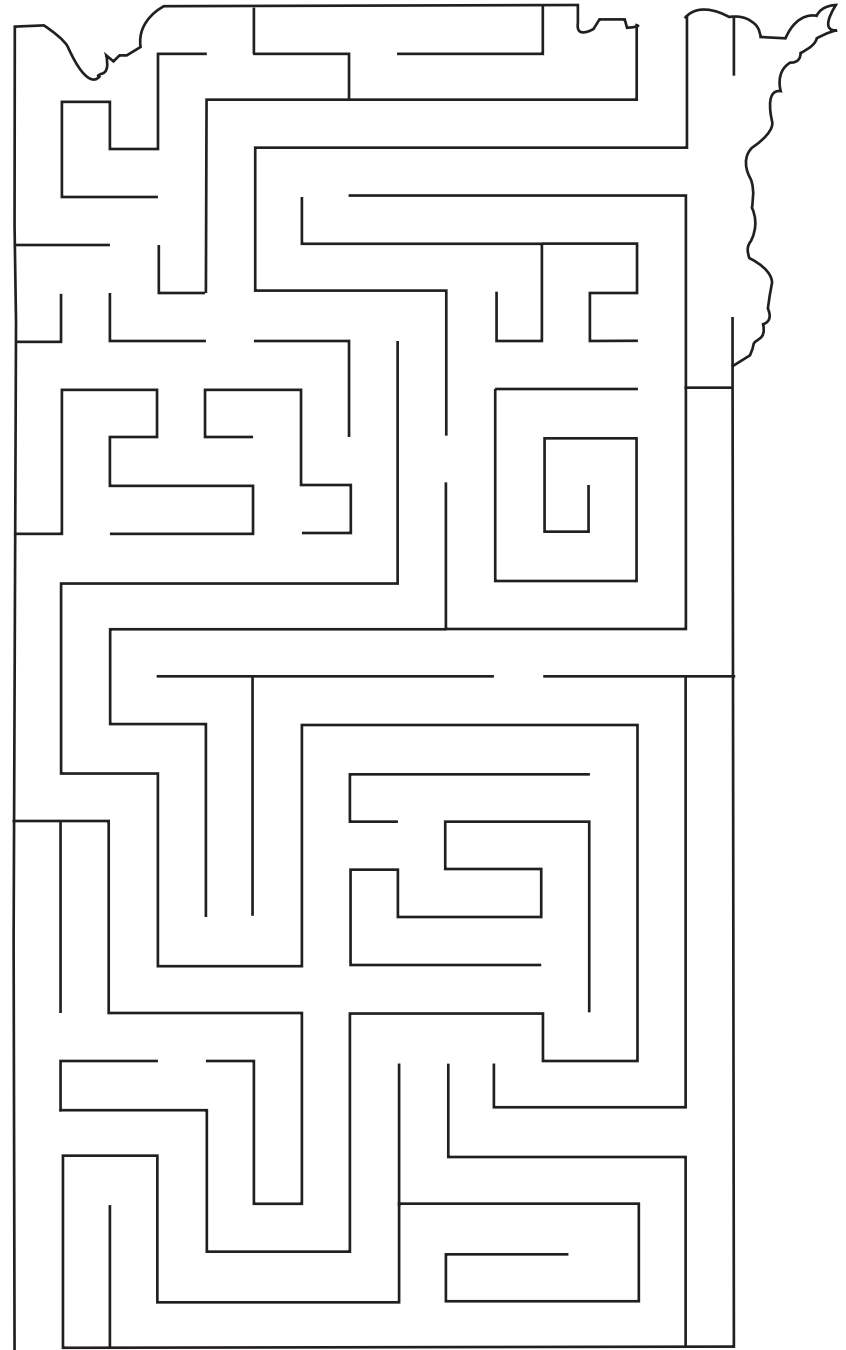


South Dakota

ACTIVITY BOOK



SOUTH DAKOTA MAZE



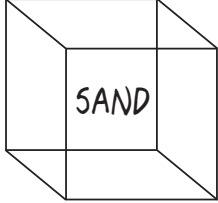
SCRAMBLED CITIES

Unscramble these South Dakota cities.

1. ISOXU LASLF
2. PARID TCYI
3. DERBAENE
4. RHOUN
5. REPIRE
6. TAWNEWROT
7. KORNGIOBS
8. LIMVORELIN
9. CLEMLITH
10. MARIBCHANEL
11. KNOYANT
12. LEMRIL

BRAIN TEASERS

Use the provided clues to solve each word or phrase.

1. 
2. STAND
I
3. WEAR
LONG
4. T
O
W
N
↓
5. HISTORY
HISTORY
HISTORY
6. ECNALG
7. GIVE GET
GIVE GET
GIVE GET
GIVE GET
8. |R|E|A|D|
9. R
R
O
A
D
A
D
10. CYCLE
CYCLE
CYCLE

TRAVEL WISHLIST

Make a list of destinations you wish to see and activities you wish to do in South Dakota. (For example: see a buffalo, hunt for hoodoos in the Badlands, etc.)

<input type="checkbox"/>	_____	<input type="checkbox"/>	_____
<input type="checkbox"/>	_____	<input type="checkbox"/>	_____
<input type="checkbox"/>	_____	<input type="checkbox"/>	_____
<input type="checkbox"/>	_____	<input type="checkbox"/>	_____
<input type="checkbox"/>	_____	<input type="checkbox"/>	_____

VISIT THE GREAT 8!

TravelSouthDakota.com

Untamed buffalo. Miles of caves. Massive monuments, mighty waters, and the Badlands' crazy rock formations. These are just some of the things you'll find when you explore South Dakota's Great 8. Watch history come alive in a Wild West city, and see how big the sky can be as it stretches out over rolling prairies. Are you ready for some fun? Circle your favorites, and make sure to enjoy the sights at each of these great places in South Dakota.



COLOR EACH OF THE GREAT 8!

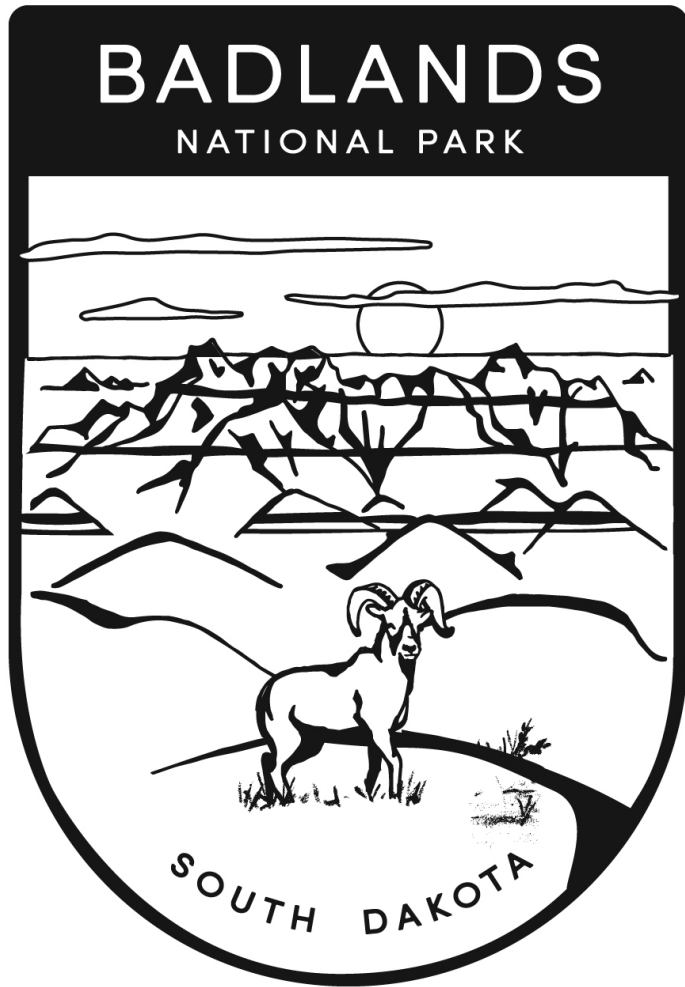
#1

#2



COLOR EACH OF THE GREAT 8!

3



4

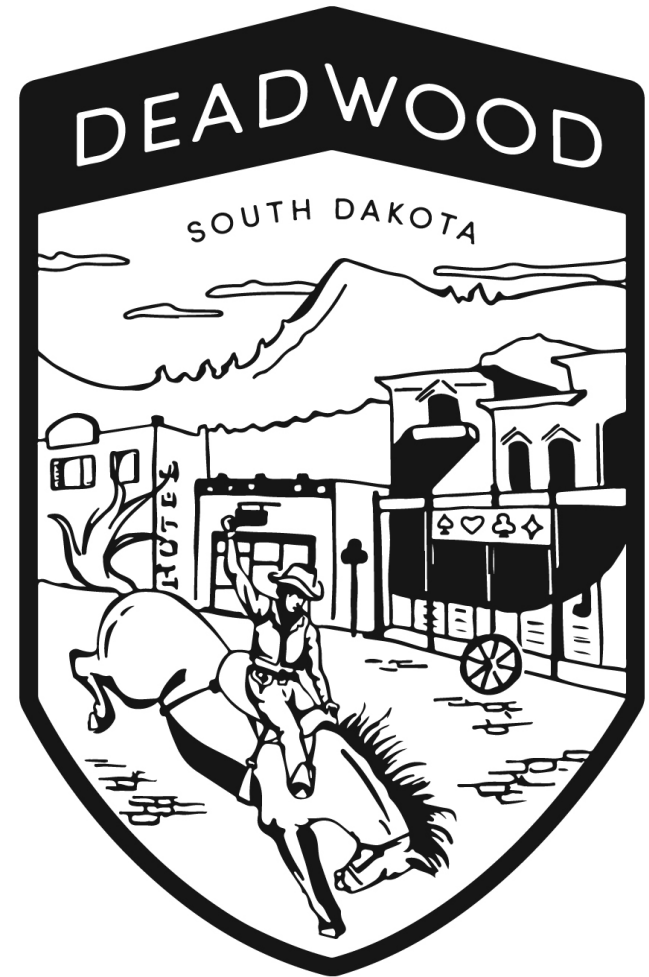


COLOR EACH OF THE GREAT 8!

#5



#6



COLOR EACH OF THE GREAT 8!

7



8



MATCHING GAME

Match the attraction to the city.

CORN PALACE

PETRIFIED WOOD PARK

MOUNT RUSHMORE NATIONAL MEMORIAL

MCCRORY GARDENS

B-1 BOMBER

OAHE DAM

GREAT PLAINS ZOO

DINOSAUR PARK

LAURA INGALLS WILDER

PRAIRIE VILLAGE

SHRINE TO MUSIC MUSEUM

MAMMOTH SITE

LAKE KAMPESKA

STORYBOOK LAND

VERMILLION

SIoux FALLS

DE SMET

BROOKINGS

MITCHELL

LEMMON

WATERTOWN

HOT SPRINGS

RAPID CITY

KEYSTONE

ABERDEEN

ELLSWORTH

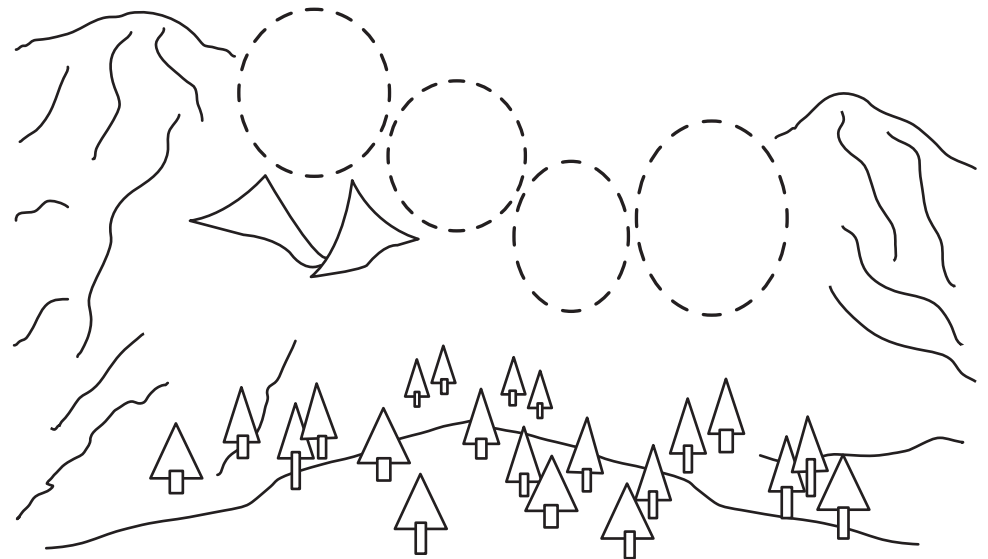
PIERRE

MADISON

CREATE YOUR OWN RUSHMORE!

Mount Rushmore National Memorial honors four U.S. presidents – George Washington, Abraham Lincoln, Thomas Jefferson, and Theodore Roosevelt.

WHO ARE FOUR IMPORTANT PEOPLE YOU WOULD PUT ON YOUR MOUNT RUSHMORE?



COLORING FUN!

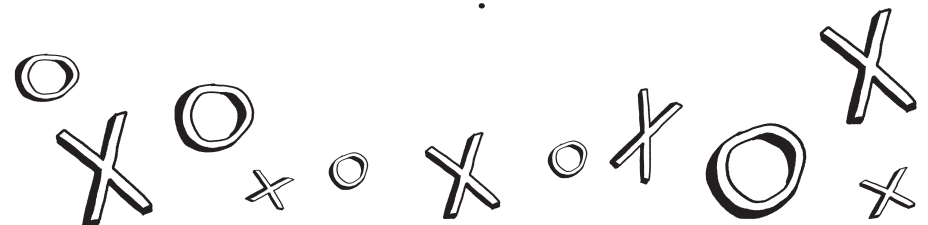
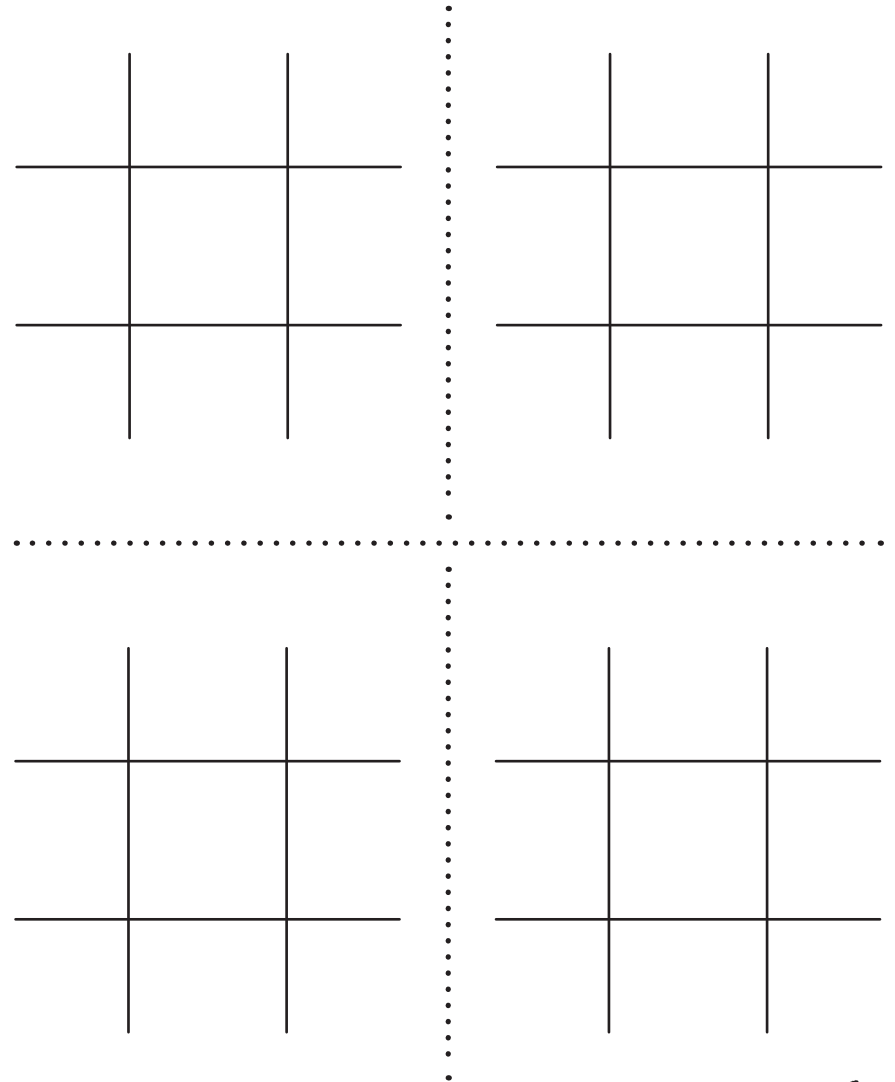


WORD SEARCH

SOUTH DAKOTA TOWNS AND CITIES

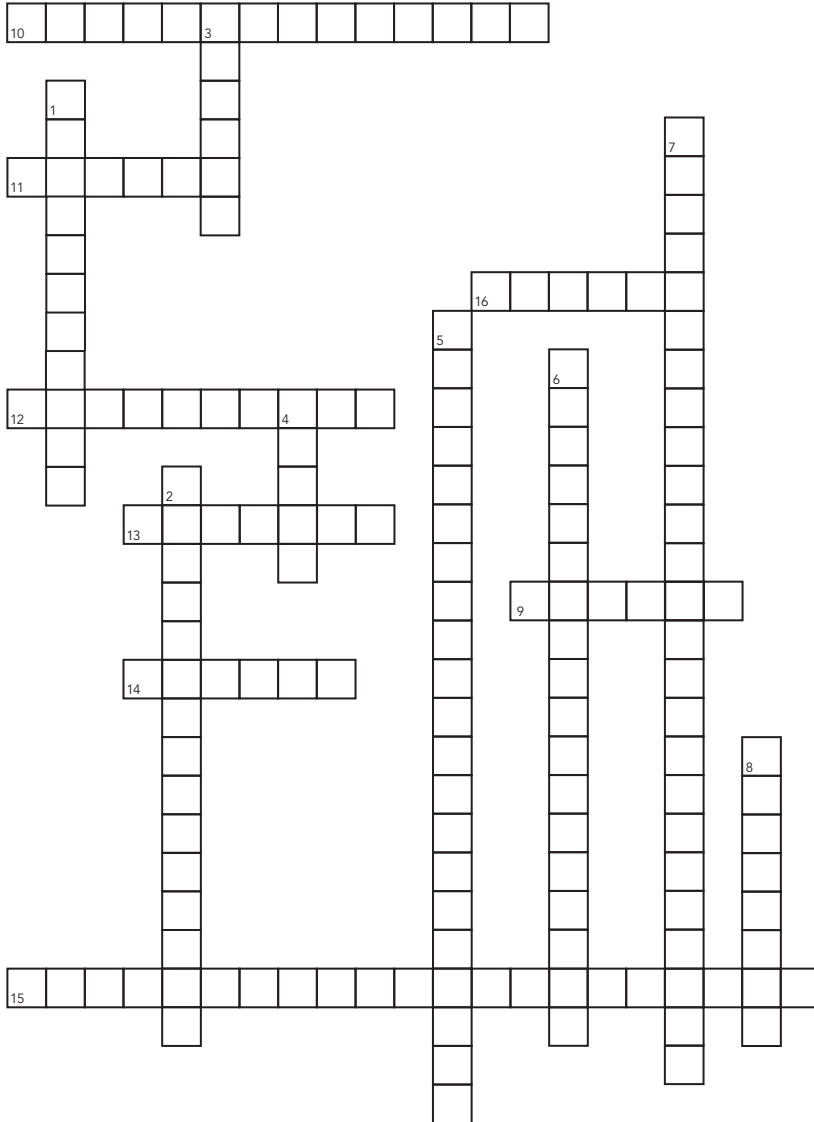
ABERDEEN	B	Z	P	J	C	E	X	Z	P	H	M	X	F	M	N
BELLE FOURCHE	R	Y	O	U	U	O	N	C	O	A	Y	P	R	G	D
BOX ELDER	E	P	A	P	A	N	J	T	D	S	M	W	M	X	U
BRANDON	D	N	Z	Z	B	E	S	I	V	I	P	Z	H	H	J
BROOKINGS	F	B	D	Y	T	P	S	K	T	S	K	R	B	N	S
CANTON	I	Q	N	F	R	O	H	C	W	S	M	R	W	F	L
DELL RAPIDS	E	X	K	I	N	B	H	S	K	E	G	B	I	N	L
HOT SPRINGS	L	I	N	Y	K	E	N	N	N	T	U	C	W	P	A
HURON	D	G	G	G	L	N	A	E	Y	O	K	O	V	J	F
LEAD	S	I	R	L	O	B	E	U	J	N	T	D	B	S	X
MADISON	E	X	I	T	L	D	D	D	U	R	K	A	G	O	U
MILBANK	Y	V	N	I	R	A	I	M	E	B	N	N	L	O	O
MITCHELL	U	A	M	E	E	H	R	T	R	O	I	T	U	P	I
MOBRIDGE	C	T	B	L	M	E	A	A	T	K	K	G	T	P	S
PIERRE	G	A	A	N	P	W	N	K	O	R	A	I	K	I	W
RAPID CITY	M	S	Z	V	J	D	N	O	B	I	I	I	T	E	L
REDFIELD	H	I	W	D	O	A	R	J	D	S	E	U	S	R	E
SIOUX FALLS	J	G	J	N	Y	B	T	W	I	T	G	H	P	R	H
SISSETON	Y	R	K	J	X	T	E	K	T	O	D	U	E	E	C
SPEARFISH	N	U	U	S	K	S	J	Q	A	L	I	R	A	J	R
STURGIS	O	T	X	W	D	Q	O	C	Z	I	R	O	R	V	U
VERMILLION	I	S	R	S	Y	I	Y	W	S	N	B	N	F	R	O
WATERTOWN	L	B	A	A	Y	R	P	N	C	W	O	H	I	R	F
WINNER	L	O	P	N	I	U	C	A	L	X	M	Z	S	P	E
YANKTON	I	R	I	U	F	M	S	P	R	A	I	G	H	D	L
	M	E	D	Z	W	T	M	I	M	L	A	V	K	Y	L
	R	N	C	Q	Q	Y	B	O	X	E	L	D	E	R	E
	E	N	I	J	T	H	Q	W	X	G	T	E	B	Q	B
	V	I	T	M	R	D	W	C	Q	N	F	F	D	Z	W
	O	W	Y	Y	T	K	P	Q	B	N	D	A	W	G	K

TIC-TAC-TOE



SOUTH DAKOTA

CROSSWORD



DOWN

1. State fossil
2. State song
3. State soil
4. State sport
5. State motto
6. State nickname
7. State bird
8. State insect

ACROSS

9. State dessert
10. State jewelry
11. State capital
12. State mineral
13. State fish
14. State animal
15. State slogan
16. State flower

DOT-TO-DOT



SOUTH DAKOTA MAD LIB

Fill in the blanks below. Then read the story on the next page and fill in the blanks with the words from this page.

- age _____
- friend's name _____
- another friend's name _____
- adjective _____
- plural noun _____
- emotion ending in *-ly* _____
- verb ending in *-ing* _____
- body part _____
- verb ending in *-ing* _____
- one friend's name _____
- verb ending in *-ing* _____
- verb ending in *-ed* _____
- favorite food _____
- body part _____
- favorite color _____
- type of transportation _____
- adjective _____
- number _____
- body part _____
- emotion ending in *-ed* _____
- your favorite expression _____
- verb ending in *-ed* _____
- plural noun _____
- adjective _____

Read the story, filling in the blanks with the words from the previous page.

For my _____ birthday, my best friends _____ and _____ decided to take me on a _____ vacation to South Dakota. There are many awesome _____ in South Dakota, but my friends kept talking _____ about _____ "The Faces." As we continued to drive, I kept a/an _____ out for "The Faces."

Before long, I realized the car was stopping. I began to wonder why but then saw buffalo _____ in the middle of the road! I asked my friend if those were the faces we came to see. _____ said, "No, but keep _____."

After the buffalo _____, we began winding our way through the Black Hills National Forest. Feeling slightly car sick from eating too many _____, I glanced at the mirror to see that my _____ was a shade of _____. I quickly got over that when I was startled by honking coming from the _____ in front of us. I looked up to see us driving through a _____ tunnel.

At the end of the tunnel, I saw _____ Presidents _____ carved into the side of a mountain. I was so _____ to be at Mount Rushmore that I yelled " _____!" We got out of the car. I _____ my friends, took _____, and thanked them for such a _____ trip to South Dakota!

SOUTH DAKOTA FACTS

In 1804, Lewis and Clark explored present-day South Dakota's Missouri River.

In 1861, the Dakota Territory was formed, which included present-day South Dakota, North Dakota, and parts of Wyoming and Montana.

In 1879, Laura Ingalls Wilder and her family settled in De Smet.

South Dakota gained statehood on November 2, 1889, and was the 40th state to join the Union.

In 1927, sculptor Gutzon Borglum began work on Mount Rushmore National Memorial. He intended to carve the four presidents to their waists, but he died in 1941 before the work was finished.

In 1948, the first blast took place on the Crazy Horse mountain carving in the Black Hills. The memorial is a tribute to Native Americans.

South Dakota has 66 counties.

South Dakota is the 16th largest state in size. South Dakota encompasses 77,123 square miles, averaging 10 people per square mile.

Located near Pierre, Oahe Dam is the second-largest rolled-earth dam in the world.

South Dakota has the highest point in the United States east of the Rocky Mountains (Black Elk Peak, formerly Harney Peak, in the Black Hills; elevation 7,242 feet) and more miles of shoreline than the state of Florida.

- * **State Capital:** Pierre (pronounced "peer")
- * **State Animal:** Coyote
- * **State Bird:** Chinese Ring-Necked Pheasant
- * **State Fish:** Walleye
- * **State Insect:** Honey Bee
- * **State Flower:** Pasque
- * **State Tree:** Black Hills Spruce
- * **State Fossil:** Triceratops
- * **State Soil:** Houdek
- * **State Mineral:** Rose Quartz

- * **State Food:** Chislic
- * **State Dessert:** Kuchen
- * **State Sport:** Rodeo
- * **State Song:** "Hail, South Dakota"
- * **State Motto:** "Under God, the people rule"
- * **State Slogan:** "Great Faces. Great Places."
- * **State Jewelry:** Black Hills Gold
- * **State Nickname:** The Mount Rushmore State

ANSWER KEY

SCRAMBLED CITIES

- Sioux Falls, 2. Rapid City, 3. Aberdeen, 4. Huron, 5. Pierre, 6. Watertown, 7. Brookings, 8. Vermillion, 9. Mitchell, 10. Chamberlain, 11. Yankton, 12. Miller

BRAIN TEASERS

- sandbox, 2. I understand, 3. long underwear, 4. downtown, 5. history repeats itself, 6. glance backwards, 7. forgive and forget, 8. read between the lines, 9. crossroads, 10. tricycle

MATCHING GAME

Corn Palace - Mitchell, Petrified Wood Park - Lemmon, Mount Rushmore National Memorial - Keystone, McCrory Gardens - Brookings, B-1 Bomber - Ellsworth, Oahe Dam - Pierre, Great Plains Zoo - Sioux Falls, Dinosaur Park - Rapid City, Laura Ingalls Wilder - De Smet, Prairie Village - Madison, Shrine to Music Museum - Vermillion, Mammoth Site - Hot Springs, Lake Kampeska - Watertown, Storybook Land - Aberdeen

CROSSWORD

Down: 1. triceratops, 2. Hail, South Dakota, 3. houdek, 4. rodeo, 5. Under God, the People Rule, 6. Mount Rushmore State, 7. Chinese Ring-Necked Pheasant, 8. Honey Bee

Across: 9. Kuchen, 10. Black Hills Gold, 11. Pierre, 12. Rose Quartz, 13. Walleye, 14. Coyote, 15. Great Faces. Great Places., 16. Pasque

WORD SEARCH

B	Z	P	J	C	E	X	Z	P	H	M	X	F	M	N
R	Y	O	U	O	N	C	O	A	Y	P	R	G	D	
D	N	Z	Z	B	E	S	T	V	I	P	Z	H	H	J
F	B	D	Y	T	D	S	K	T	S	K	R	B	N	S
Q	N	F	R	O	H	C	W	S	M	R	W	F	L	L
E	X	K	I	N	B	H	S	K	E	G	B	I	N	L
L	I	N	Y	K	E	N	N	N	T	U	C	W	P	A
D	O	G	G	L	M	A	E	Y	O	K	O	V	J	F
S	I	R	L	O	B	E	U	J	N	T	D	B	S	X
E	X	I	T	L	D	D	U	R	K	A	G	O	U	
Y	V	N	I	R	A	I	M	E	B	M	N	L	O	O
U	A	M	E	F	H	R	T	R	O	I	T	U	P	
C	T	B	L	M	E	A	A	T	K	K	G	T	P	S
G	A	A	N	P	W	N	K	O	R	A	I	K	W	
M	S	Z	V	J	D	N	O	B	I	A	I	T	E	L
H	J	W	D	O	A	R	J	D	S	E	U	\$	R	H
J	G	J	N	X	B	T	W	I	T	O	D	U	R	E
Y	R	K	J	X	T	E	K	T	O	D	U	R	E	C
N	U	T	X	K	S	J	O	Q	A	L	I	R	O	R
O	T	X	W	D	Q	S	O	C	Z	I	R	O	R	F
L	O	P	S	R	A	Y	R	F	N	C	W	O	H	\$
L	O	R	P	U	F	M	S	P	R	A	I	G	H	D
M	R	E	N	T	W	T	M	I	M	L	A	V	K	Y
E	N	T	C	Q	Q	Y	B	O	X	E	L	D	E	R
R	E	N	T	J	T	H	W	Q	X	G	T	F	B	O
W	Y	Y	T	K	P	Q	B	N	D	A	W	G	K	

